

Kent Police's new Neighbourhood Policing model launched in June 2023:

Each district in Kent will now have a community safety unit with three teams to tackle Problems within their areas.

These teams are:



Beat Officers

Key contact for wards

Supervisor – Sgt Richard Batten

Neighbourhood Task Force

Hotspot and complex problem solving

Supervisor – Sgt Kim Cameron

Child Centred Policing Team

Youth interventions

Supervisor – Sgt Katie Reed

Wards and Your Beat Officers:

Ashford Urban & Rural Wards



Victoria: PC Joseph Delargy-Vollans

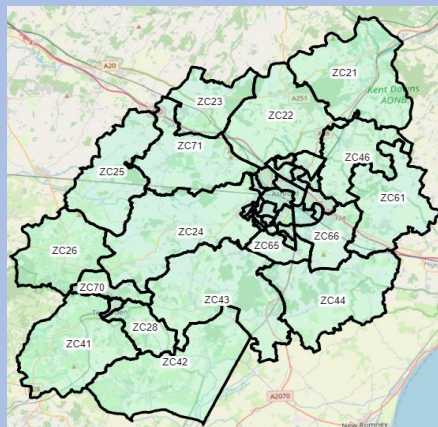
Urban South PC Joshua Wheatley **Urban North** PC Adam Staughton

Areas and links:

[Singleton East](#)
[Singleton West](#)
[Park Farm North](#)
[Park Farm South](#) &
[Washford Farm](#)
[Stanhope](#) [Roman](#)
[Beaver](#)
[Aylesford & East Stour](#)

Areas and links:

[Godington](#)
[Repton](#)
[Bockhanger](#)
[Bybrook](#)
[Kennington](#) [Goat Lees](#)
[Furley](#)
[Conningbrook & Little Burton](#)
[Willesborough](#) [Highfield](#)



Rural South PC Emmanuel Dalli

Areas and links:

[Tenterden South](#)
[Tenterden North](#)
[Rolvenden & Tenterden West](#)
[Tenterden St Michaels](#)
[Isle of Oxney](#)
[Weald South](#)
[Weald Central](#)
[Weald North](#)
[Biddenden](#)

Rural North PC James Murrell

Areas and links:

[Downs North](#)
[Downs West](#)
[Saxon Shore](#)
[Charing](#)
[Bircholt](#)
[Wye with Hinxhill](#)
[Mersham Sevington South & Finberry](#)
[Kingsnorth Village](#)
[Upper Weald](#)

E-scooters and Bike Crime

E-scooters – are you breaking the law?



[Advice on e-scooter usage | Kent Police](#)



[Protect your bike from theft | Kent Police](#)

[Report a crime | Kent Police](#)

Stay Alert

District wide crime prevention Advice and Links

[Advice and information | Police.uk](#)

[Protecting your property against vandalism](#)



Top Five items commonly stolen from sheds: 1 Bikes
 2 Mowers 3 Sports equipment 4 Power tools 5 Garden tools

Current Seasonal trends: theft of pedal cycles, Mowers, theft due to window left open in summertime.

Antisocial Behaviour



[Antisocial behaviour support organisations | Kent Police](#)

[Nuisance behaviour by groups of people | Kent Police](#)

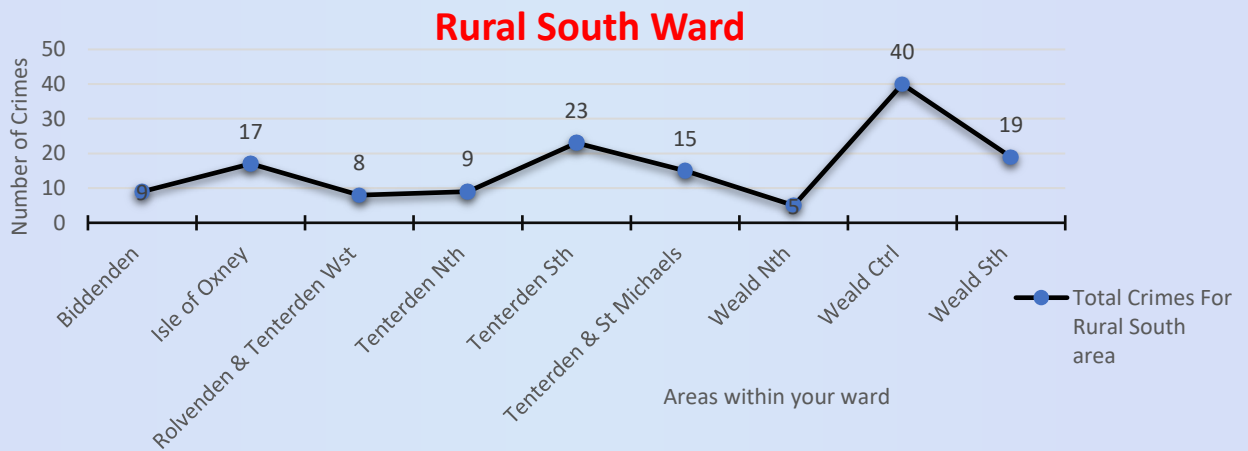
[Tips for making other people feel safer on the streets | Kent Police](#)

[Vehicle nuisance involving cars, bikes and mopeds | Kent Police](#)

Rural South Ward: Top Reported Crimes for July 2023.
 Crime Stats link for [Rural South](https://www.police.uk/pu/your-area/kent-police/) (Kent Police Website)

Aug 2023 stats - awaiting release.

<https://www.police.uk/pu/your-area/kent-police/>



Rural South Ward Area News:

Hello All, Its been a particularly busy month across the district and as such the CSU team has been working hard ensuring that all emergency calls have been attended and dealt with expeditiously. We have been assisting our response officer colleagues across the district to help manage the demand. As well as patrolling and servicing our wards individually and collectively.

Doorstep fraud: Fraudsters try to scam you after knocking on your door. They might be pretending to collect money for charity or offering to sell you overpriced or substandard products or services, such as home improvements. In the case of rogue traders, they will call uninvited and offer to do some work on your roof, driveway or garden.

We have seen a number of incidents of cold callers in the rural areas whereby persons have been attending locations offering services such as driveway cleaning and window installations. Often charging high prices for little work. We have been conducting high visibility patrol in the targeted areas. We implore residents to not answer to door-to-door salespeople. And please contact police if there are any concerns in regard to suspicious incidents.

<https://www.kent.police.uk/ro/report/fo/v2/report-fraud-bribery-corruption/>

Advice: Unsure who is knocking at your door? **You don't need to open it.**

- 1 Use the door chain.
- 2 Ask for I.D.
- 3 Check their credentials.
4. Ensure rear doors and windows are shut when answering your front door.
- 5 Call police if you suspect cold callers may be bogus. Suspicious behaviour call **101**, or Crime in progress dial **999**.

[Annoying phone calls or unwanted visits | Kent Police](#)

My Community Voice
 Protecting the neighbourhoods of Kent and Medway

MCV is a two-way engagement tool brought to you by Kent Police

- Find out what's happening in your area
- Receive alerts from your local officers
- Tell us what matters most to you
- Sign up today and make your voice count

Find out more www.MyCommunityVoiceKent.co.uk

Keep Updated with What is happening in your area.

Click to be taken to Alerts
[Latest Alerts - My Community Voice Kent](#)